

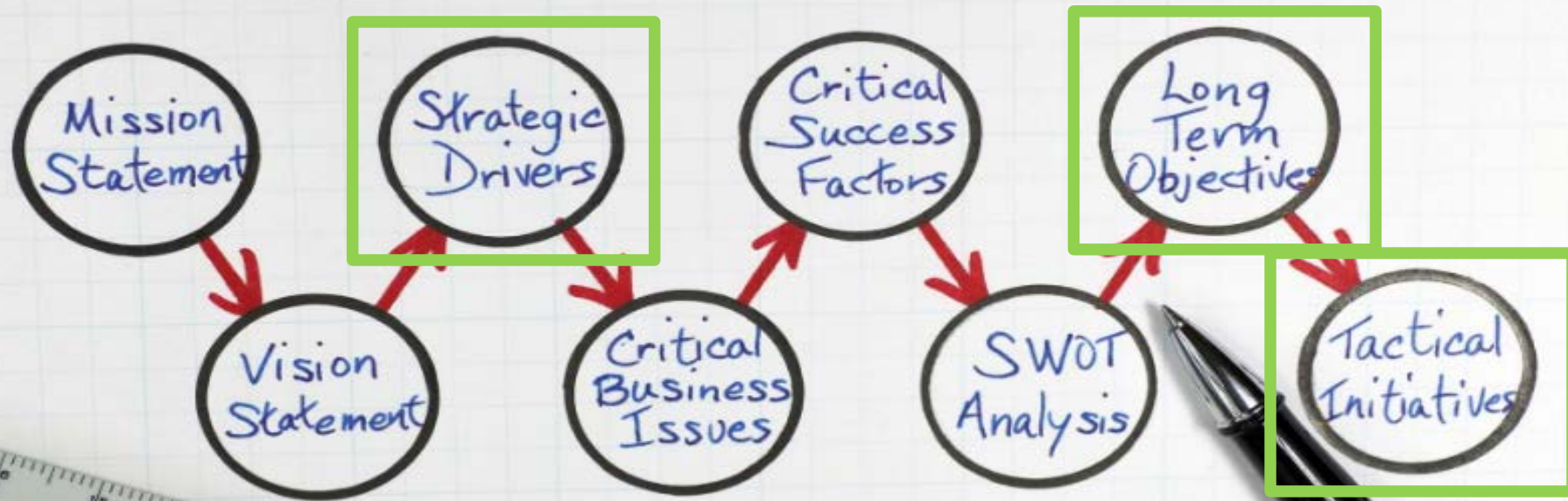
Building Partnerships to Extend Reach/International Collaborations

Elizabeth Nolan,
Deputy Executive Director and Chief Publishing Officer
The Optical Society (OSA)

23 March 2017



STRATEGIC PLANNING



NO IDEA

SOMEWHERE

THIS WAY

AMBIGUOUS

???

VAGUE

THAT WAY

AROUND

ELUSIVE

Do you need to rethink your governance structure?



Board composition?

International presence on all governance committees?

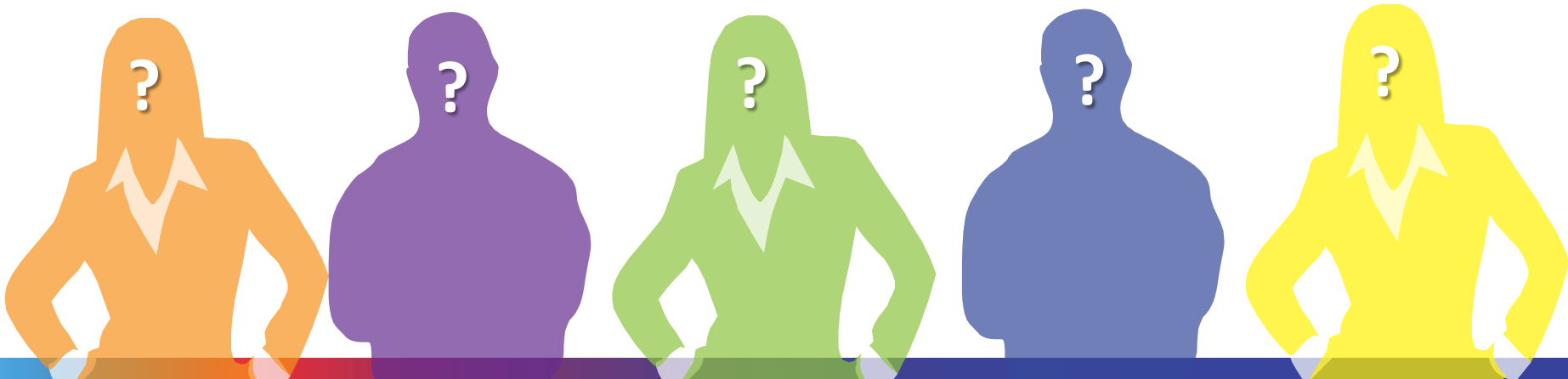
Formation of new Council or Committee?

Will hitting your goal require additional resources?

Direct, non-staff related expenses?

Increase in staff?

Both?





How does going global impact culture?



How can you use partnerships?

THANK YOU

Elizabeth Nolan

enolan@osa.org

202-441-5566

OSA[®]
The Optical Society

100
Since 1916

